

DSE8760

REAR MOUNTED SYNCHRONISING AUTO TRANSFER SWITCH & MAINS CONTROL MODULE

Used in conjunction with DSE remote displays

FEATURES



The DSE8760 is an easy-to-use single or multi-mains controller with automatic transfer switch capability. Designed to synchronise single or multiple DSE8x10s and DSE8680s with single or multiple mains (utility) supplies, the DSE8760 will automatically control the change over from mains (utility) to generator supply or run generators in synchronisation with the mains (utility) to provide no-break, peak lopping and peak shaving power solutions.

The modules are designed to work with independent front display screens which are connected via a data link up to a maximum distance of 1 km. These must be ordered as a separate item.

The module can indicate operational status and fault conditions on the LCD screen (multiple languages available), by illuminated LED, audible sounder and SMS messaging.

Comprehensive communications are also available via RS232, RS485 & Ethernet for remote PC control and monitoring, and integration into building management systems. The comprehensive event log will record up to 250 events to facilitate maintenance.

An extensive number of fixed and flexible monitoring and protection features are included. Easy adjustment of the sequences, timers and alarms can be made using the DSE PC Configuration Suite Software.

Selected configuration is also available via the module's display panel.

With all communication ports capable of being active at the same time, the DSE8xxx Series is ideal for a wide variety of demanding load share applications.

KEY LOAD SHARE FEATURES (WITH DSE8x10) :

- Peak lopping/shaving
- Sequential set start
- Manual voltage/frequency adjustment
- R.O.C.O.F. and vector shift protection
- Generator load demand
- Automatic hours run balancing
- Mains (Utility) de-coupling
- Mains (Utility) de-coupling test mode
- Bus failure detection
- Volts and frequency matching.
- kW & kV Ar load sharing

ENVIRONMENTAL TESTING STANDARDS

ELECTRO MAGNETIC COMPATIBILITY

BS EN 61000-6-2
EMC Generic Immunity Standard for the Industrial Environment
BS EN 61000-6-4
EMC Generic Emission Standard for the Industrial Environment

ELECTRICAL SAFETY

BS EN 60950
Safety of Information Technology Equipment, including Electrical Business Equipment

TEMPERATURE

BS EN 60068-2-1
Ab/Ae Cold Test -30 °C
BS EN 60068-2-2
Bb/Be Dry Heat +70 °C

VIBRATION

BS EN 60068-2-6
Ten sweeps in each of three major axes
5 Hz to 8 Hz at +/-7.5 mm, 8 Hz to 500 Hz at 2 GN

HUMIDITY

BS EN 60068-2-30
Db Damp Heat Cyclic 20/55 °C at 95% RH 48 Hours
BS EN 60068-2-78
Cab Damp Heat Static 40 °C at 93% RH 48 Hours

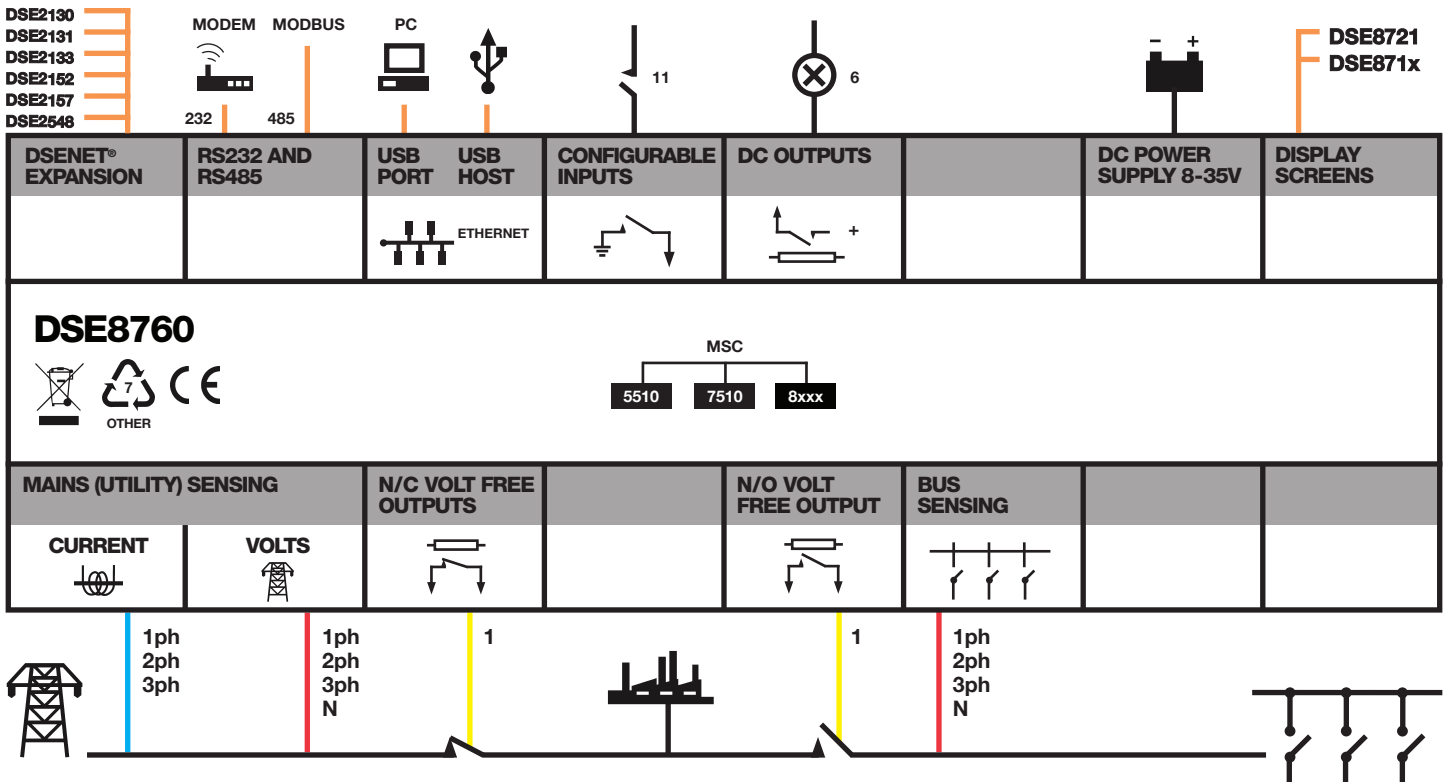
SHOCK

BS EN 60068-2-27
Three shocks in each of three major axes
15 GN in 11 ms

DEGREES OF PROTECTION PROVIDED BY ENCLOSURES

BS EN 60529
IP65 - Front of module when installed into the control panel with the supplied sealing gasket.

COMPREHENSIVE FEATURE LIST TO SUIT A WIDE VARIETY OF LOAD SHARE APPLICATIONS

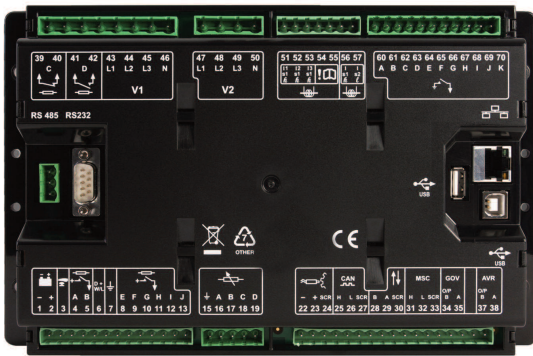


DSE8760

REAR MOUNTED SYNCHRONISING AUTO TRANSFER SWITCH & MAINS CONTROL MODULE

Used in conjunction with DSE remote displays

FEATURES



DSE8721
Colour Remote Display Module



DSE8716
Standard Remote Display Module

KEY FEATURES

- Can be set as a DSE8710 or DSE8760
- Independent display screen options
- Mains (utility) failure detection
- Mains (utility) power monitoring (kW, kV Ar, kV A and pf)
- Comprehensive synchronising and loadsharing capabilities
- Peak lopping & shaving functionality
- Mains (utility) kW export protection
- Mains (utility) de-coupling protection
- Advanced integral PLC editor
- User configurable RS232, RS485 & Ethernet communications
- MODBUS RTU & TCP support
- User configurable MODBUS pages
- Advanced SMS control and fault messaging (additional GSM modem required)
- DSENet expansion compatible
- Data logging and trending

- Multiple display languages
- Five key menu navigation
- Front panel editing with PIN protection
- Customisable status screens
- Configurable inputs (11)
- Configurable outputs (8)
- Configurable timers and alarms
- Multiple entry scheduler
- Configurable event log (250)
- Easy access diagnostic pages
- LED and LCD alarm indication
- USB connectivity
- Backed up real time clock
- Fully configurable via DSE Configuration Suite PC Software

KEY BENEFITS

- A single flexible solution for multiple applications
- Compatible with DSE5510, DSE7510 & DSE8x10 series of modules
- Real-time clock provides accurate event logging
- Ethernet communication provided built in advanced remote monitoring.

- Can be integrated into building management systems (BMS) and programmable logic control (PLC)
- Increased input and output expansion capability via DSENet®
- Licence-free PC software
- IP65 rating (with supplied gasket) offers increased resistance to water ingress
- Advanced Internal PLC editor allows user configurable functions to meet specific application requirements.

EXPANSION DEVICES

- DSE124 CAN/MSD Extender
- DSE2130 Input Expansion Module
- DSE2131 Ratiometric Input Expansion Module
- DSE2133 RTD & Thermocouple Expansion Module
- DSE2152 Analogue Output Expansion Module
- DSE2157 Output Expansion Module
- DSE2548 LED Expansion Module

SPECIFICATION

DC SUPPLY

CONTINUOUS VOLTAGE RATING
8 V to 35 V Continuous

CRANKING DROPOUTS

Able to survive 0 V for 50 mS, providing supply was at least 10 V before dropout and supply recovers to 5 V. This is achieved without the need for internal batteries.

MAXIMUM OPERATING CURRENT

460 mA at 12 V, 245 mA at 24 V

MAXIMUM STANDBY CURRENT

375 mA at 12 V, 200 mA at 24 V

MAINS (UTILITY)

VOLTAGE RANGE
15 V to 333 V AC (L-N)

FREQUENCY RANGE

3.5 Hz to 75 Hz

BUS

VOLTAGE RANGE
15 V to 333 V AC (L-N)

FREQUENCY RANGE

3.5 Hz to 75 Hz

OUTPUTS

OUTPUTS C & D

8 A at 250 V AC (Volt free)

AUXILIARY OUTPUTS E,F,G,H, I & J

2 A DC at supply voltage

DIMENSIONS

OVERALL

240 mm x 181 mm x 42 mm
9.4" x 7.1" x 1.6"

OPERATING TEMPERATURE RANGE

-30 °C to +70 °C
-22 °F to +158 °F

STORAGE TEMPERATURE RANGE

-40 °C to +85 °C
-40 °F to +185 °F

RELATED MATERIALS

TITLE

DSE8721 Colour Remote Display Module Data Sheet
DSE871x Mono Remote Display Module Data Sheet
DSE8700 Installation Instructions
DSE8760 Operator Manual
DSE8700 PC Configuration Suite Manual
DSE8710 Data Sheet
DSE8680 Data Sheet
DSE8810 Data Sheet
DSE8860 Data Sheet

PART NO'S

055-073
055-084
053-073
057-125
057-127
055-184
055-091
055-116
055-139

DEEP SEA ELECTRONICS PLC UK

Highfield House, Hunmanby Industrial Estate, Hunmanby YO14 0PH
TELEPHONE +44 (0) 1723 890099 **FACSIMILE** +44 (0) 1723 893303
EMAIL sales@deepseapl.com **WEBSITE** www.deepseapl.com

DEEP SEA ELECTRONICS INC USA

3230 Williams Avenue, Rockford, IL 61101-2668 USA
TELEPHONE +1 (815) 316 8706 **FACSIMILE** +1 (815) 316 8708
EMAIL sales@deepseausa.com **WEBSITE** www.deepseausa.com